

Phifertex[®]

BY PHIFER

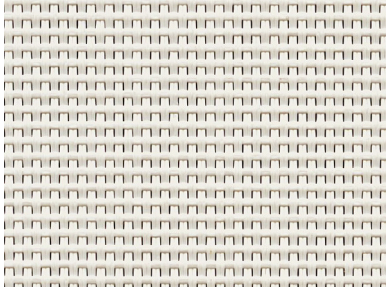


Resort Collection
Slingable Fabrics

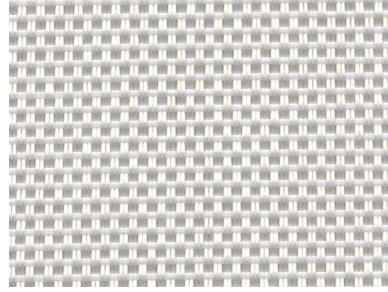




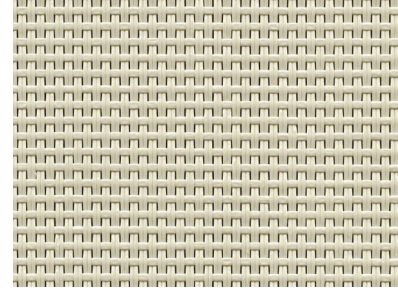
Resort Collection
Slingable Fabrics



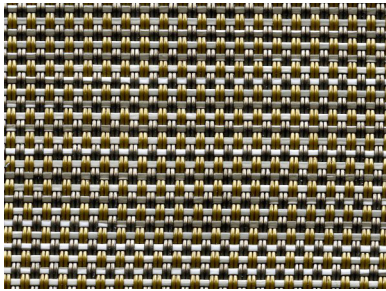
White | 000
3007143 | Construction: 42x14



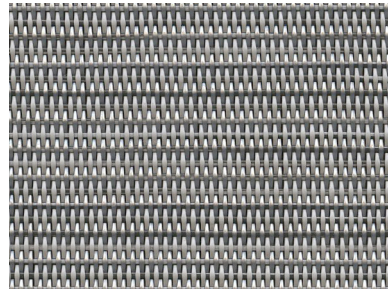
Glaze | 0MH
3044375 | Construction: 42x14



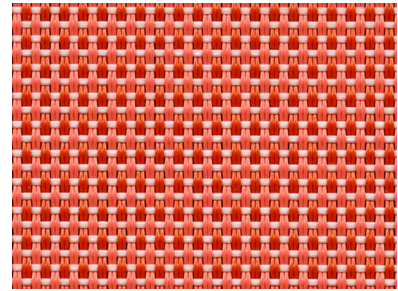
Grey Sand | X00
3007163 | Construction: 42x14



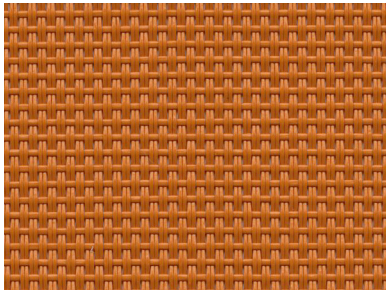
NEW | Madras Tweed Caramel | NHF
3047083 | Construction: 42x16



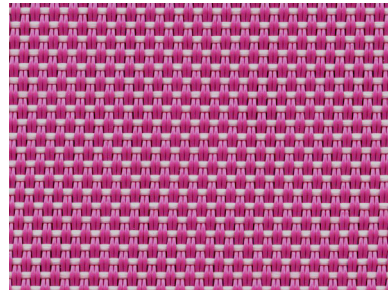
Metallica Platinum | XUP
3025678 | Construction: 42x14



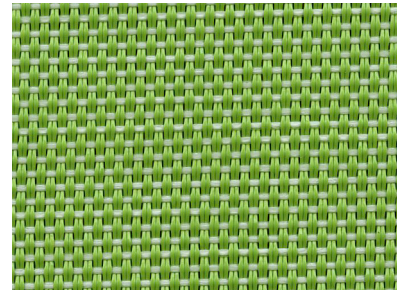
Straw Mat Coral | KBQ
3038514 | Construction: 42x14



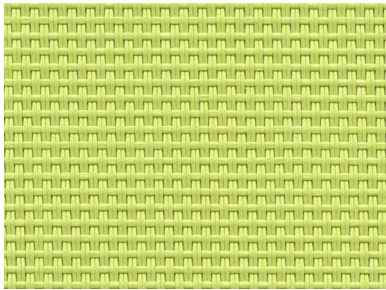
Snappy | KF4
3013965 | Construction: 42x14



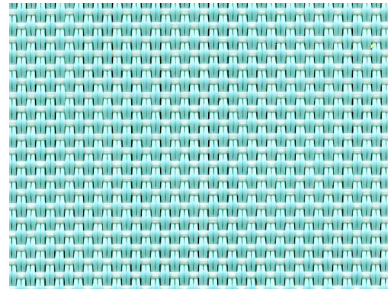
Orchid | KCA
3039243 | Construction: 42x14



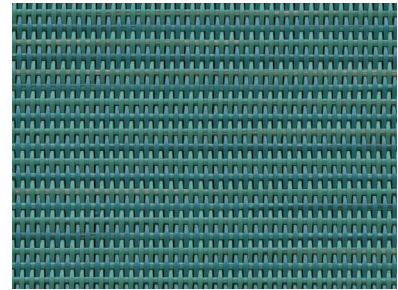
Citron | DCQ
3039244 | Construction: 42x14



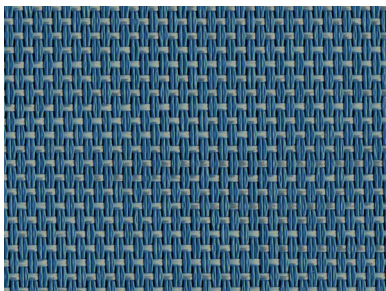
Garden Green | DB6
3013966 | Construction: 42x14



Breeze | LIR
3039246 | Construction: 42x14



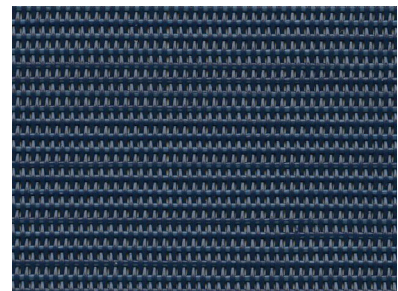
Metallica Lagoon | LGD
3036949 | Construction: 42x14



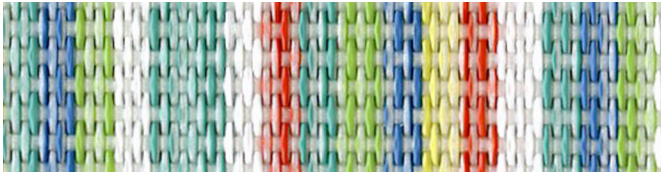
Pacific | LIQ
3039245 | Construction: 42x14



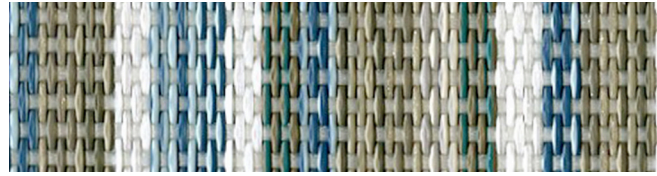
Royal Blue | G00
3007156 | Construction: 42x14



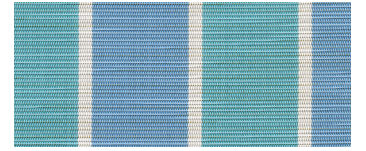
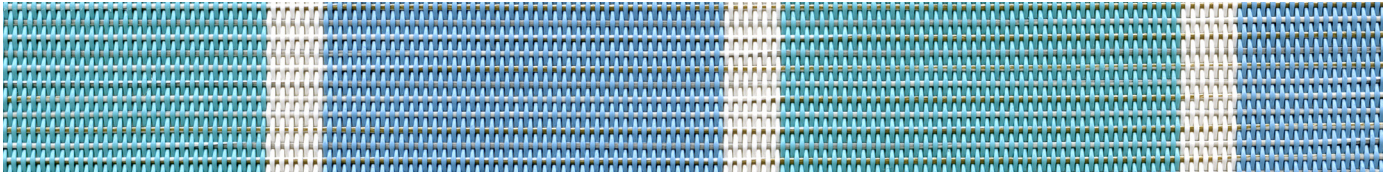
Dupioni Sapphire | L96
3029023 | Construction: 42x14



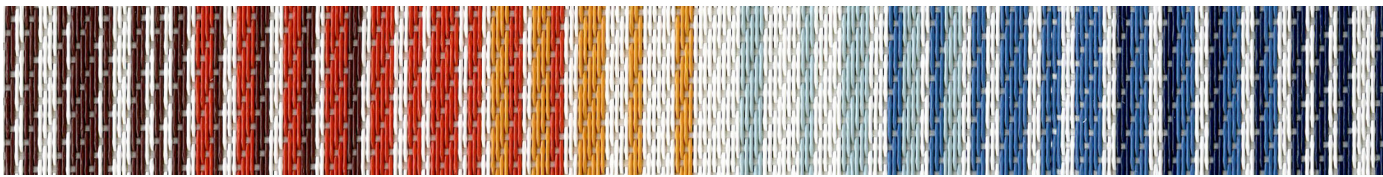
Coco Confetti | DCR | 3039250 | Construction: 42x14



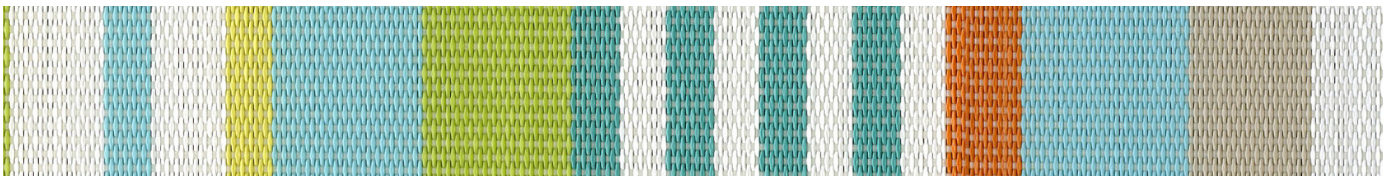
Coco High Tide | LIT | 3039251 | Construction: 42x14



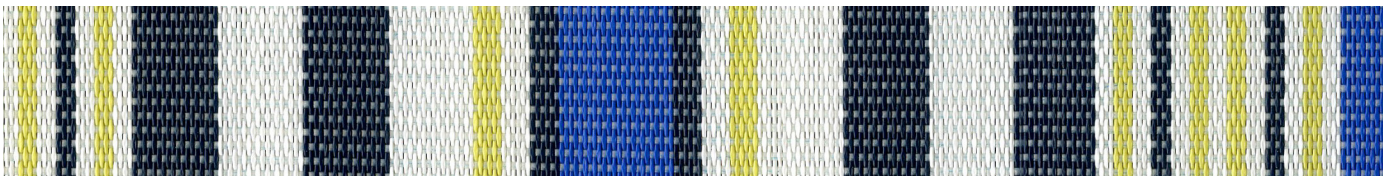
NEW | Fiji Stripe Aqua | LPT
3047312 | Construction: 42x14



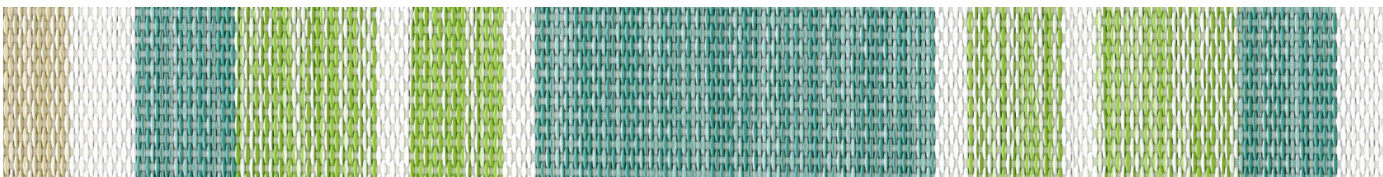
Daytripper Horizon | KCE
3039290 | Construction: 42x14



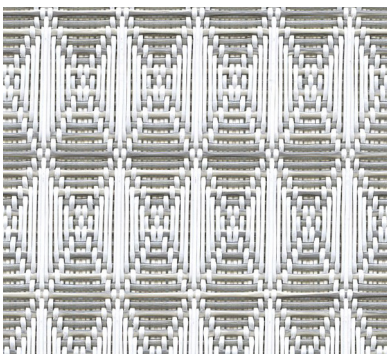
Kona Playa | DCT
3039253 | Construction: 42x14



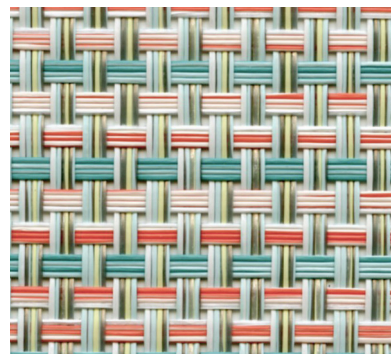
Maui Royal | LIS
3039255 | Construction: 42x14



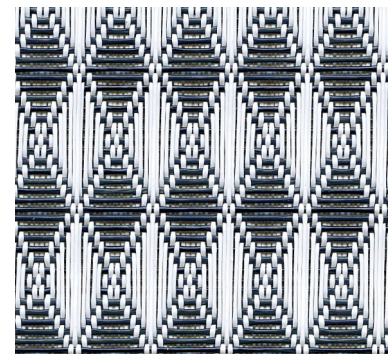
Tempo Spearmint | DCS
3039252 | Construction: 42x14



NEW | Pasadena Grey Topaz | ZJV
3047079 | Construction: 42x20



Blazer Confetti | LMP
3044357 | Construction: 25x25



NEW | Pasadena Navy | LPJ
3047139 | Construction: 42x20



FABRIC FEATURES

DURABILITY/CLEANABILITY

Functional and durable, Phifertex fabrics offer excellent performance while withstanding spills, splatters and the hustle and bustle of high traffic areas. These fabrics are easy to maintain – easily cleaned with soap and water or 50/50 bleach to water solution.

WARRANTY

Phifer offers a 3-year limited warranty for Phifertex Outdoor Fabrics. This warranty covers the fabric becoming non-functional due to loss of dimensional stability from exposure to conditions including sunlight, mildew, rot and normal atmospheric conditions. The warranty does not cover damage to the fabric from any source nor does it cover gradual fading or discoloration from atmospheric pollution or other debris. This warranty remains in effect for 3 years from the date of purchase. Phifer will provide new fabric, free of charge, to replace the non-functioning fabric. This warranty does not cover the cost of labor or other consequential or incidental expenses.



GREENGUARD

GREENGUARD Certification ensures products have met some of the world's most rigorous and comprehensive standards for low emissions of volatile organic compounds (VOCs) into indoor air. Phifer was the first manufacturer in the outdoor fabric industry to achieve GREENGUARD certification. Certification is completely voluntary and ensures that the highest industry standards are being applied to maintain indoor air quality for the health and safety of building occupants.



MICROBAN®

Phifertex fabrics are the only outdoor furniture fabrics in the world to include Microban protection. Microban antimicrobial protection works continuously to inhibit the growth of bacteria, mold and mildew that can cause stains, odors and product deterioration.



- Microban antimicrobial protection is infused into Phifertex fabrics for lasting protection that won't wash off or wear away for the lifetime of the product.
- Phifertex fabrics infused with Microban antimicrobial technology are ideal for any commercial or residential environment where microbes are a concern, including healthcare, hospitality, home, office, schools and institutions.

FLAME RETARDANCE

- National Fire Protection Association, NFPA No. 101, "Life Safety Code", Class "A" rating. (Tested in accordance to ASTM E84, Surface Burning Characteristics of Building Material.) 17x11 (ASTM E84-16), 25x25 (ASTM E84-15b), 37x15 (ASTM E84-16), Plus (ASTM E84-15b).
- International Building Code (IBC), Section 803.1.1, Class "A" rating (Tested in accordance to ASTM E84).
- Upholstered Furniture Action Council Fabric Classification Test Method 1990 (UFAC) - Class "I" Rating.
- Federal Motor Vehicles Safety Standards, Section 571.302, Standard Number 302 (FMVSS 302), Flammability of Interior Materials.
- California Technical Bulletin 117-2013, Section 1, Cover Fabric Test.

